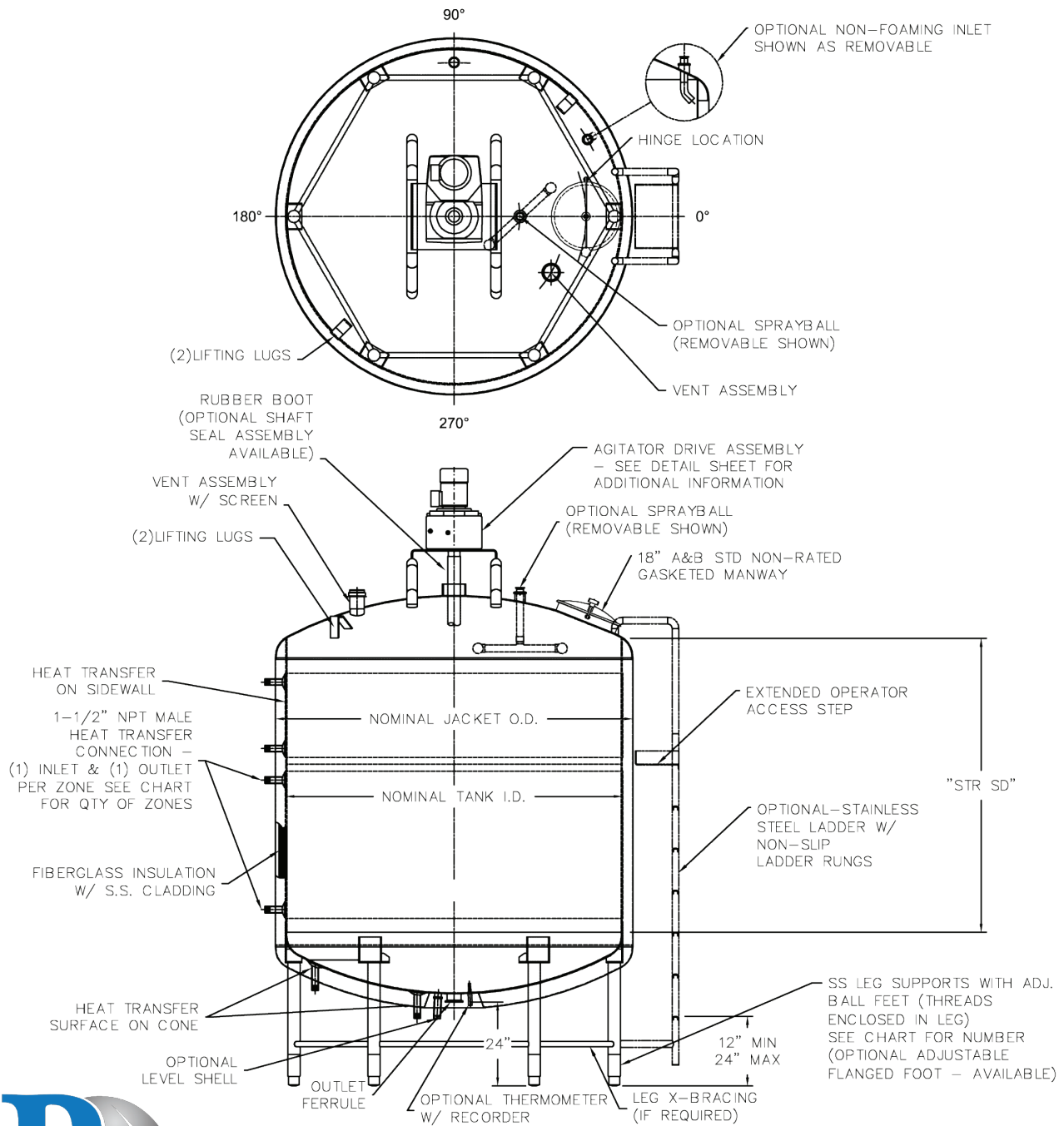


# Standard Processing Vessels

## F&D Bottom, F&D Top



201 South Wisconsin Ave.  
Stratford, WI 54484

715.687.4332  
www.abprocess.com

YOUR COMPLETE  
process systems partner.

# F&D Bottom, F&D Top

Capacity Gal/ (Lit)	I.D	STR SD	OAH	O.D.	HTS Side	HTS Bottom	# Zones	# Legs	Ship WT
200 gal (750)	48"	24"	67"	54-1/2"	17 SF	7.9 SF	1	4	#1600
300 gal (1150)	54"	30"	75"	60-1/2"	20 SF	10.0 SF	1	4	#1900
400 gal (1500)	57"	36"	82"	62-1/2"	26 SF	10.9 SF	1	4	#2300
600 gal (2250)	60"	48"	95"	66-1/2"	35 SF	13.1 SF	1	4	#2600
650 gal (2450)	66"	42"	91"	72-1/2"	44 SF	15.2 SF	1	4	#2800
850 gal (3200)	72"	48"	97"	78-1/2"	51 SF	17.5 SF	2	4	#3250
1050 gal (3975)	72"	60"	109"	78-1/2"	64 SF	17.5 SF	2	4	#3950
1500 gal (5675)	78"	72"	123"	84-1/2"	85 SF	22.0 SF	2	6	#5250
2000 gal (7575)	84"	84"	137"	90-1/2"	111 SF	27.0 SF	2	6	#6450
2500 gal (9450)	90"	96"	150"	96-1/2"	131 SF	32.2 SF	2	6	#6600
3000 gal (11350)	96"	102"	158"	102-1/2"	169 SF	32.2 SF	2	6	#7100
3500 gal (13250)	96"	120"	176"	102-1/2"	202 SF	32.2 SF	2	6	#8200
4000 gal (15150)	102"	120"	177"	108-1/2"	210 SF	38.2 SF	3	6	#8800
5000 gal (18900)	110"	130"	189"	116-1/2"	232 SF	45.0 SF	3	8	#9300
6000 gal (22700)	120"	130"	192"	126-1/2"	253 SF	49.0 SF	3	8	#10200
8000 gal (30275)	132"	144"	209"	138-1/2"	290 SF	72.0 SF	3	8	#11300

- Standard (2) utility connections per zone, # zones indicates quantity of zones of shell
- Processors include minimum 10% freeboard over capacity.
- Dual spray ball unit rated for 80 GPM @ 25 PSIG.
- Shaft sealing system(s) not rated for pressure.



201 South Wisconsin Ave.  
Stratford, WI 54484

715.687.4332

[www.abprocess.com](http://www.abprocess.com)

YOUR COMPLETE  
process systems partner.