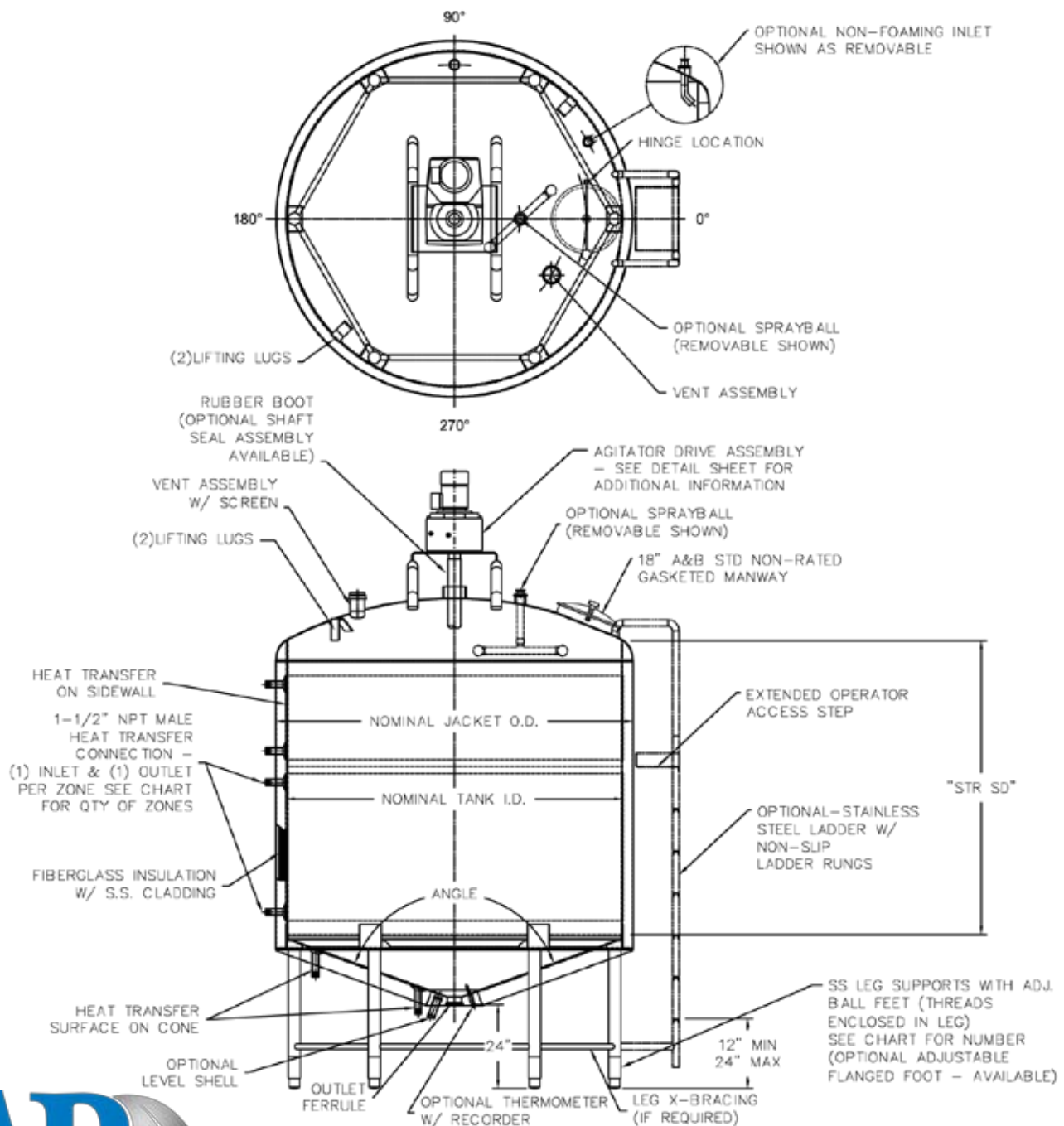


Standard Processing Vessels

Cone Bottom, F&D Top



201 South Wisconsin Ave.
Stratford, WI 54484

715.687.4332
www.abprocess.com

YOUR COMPLETE
process systems partner.

Cone Bottom, F&D Top

Capacity Gal/ (Lit)	I.D	STR SD	OAH	O.D.	Angle	HTS Side	HTS Bottom	# Zones	# Legs	Ship WT
200 gal (750)	48"	24"	73"	54-1/2"	120°	17 SF	8.5 SF	1	4	#1600
300 gal (1150)	54"	30"	82"	60-1/2"	120°	20 SF	10.7 SF	1	4	#1900
400 gal (1500)	57"	30"	84"	62-1/2"	120°	26 SF	11.3 SF	1	4	#2300
600 gal (2250)	60"	48"	102"	66-1/2"	120°	35 SF	14.0 SF	1	4	#2600
650 gal (2450)	66"	42"	99"	72-1/2"	120°	44 SF	18.8 SF	1	4	#2800
850 gal (3200)	72"	48"	108"	78-1/2"	120°	51 SF	23.3 SF	1	4	#3250
1050 gal (3975)	72"	60"	120"	78-1/2"	120°	64 SF	23.3 SF	2	4	#3950
1500 gal (5675)	78"	60"	125"	90-1/2"	120°	85 SF	27.0 SF	2	6	#5250
2000 gal (7575)	84"	84"	149"	90-1/2"	120°	111 SF	27.0 SF	2	6	#6450
2500 gal (9450)	96"	84"	145"	102-1/2"	140°	131 SF	38.5 SF	2	6	#6600
3000 gal (11350)	96"	102"	163"	102-1/2"	140°	169 SF	38.5 SF	2	6	#7100
3500 gal (13250)	96"	120"	181"	102-1/2"	140°	202 SF	38.5 SF	2	6	#8200
4000 gal (15150)	102"	120"	183"	108-1/2"	140°	210 SF	33.2 SF	3	6	#8800
5000 gal (18900)	110"	126"	192"	116-1/2"	140°	232 SF	53.2 SF	3	8	#9300
6000 gal (22700)	120"	128"	192"	126-1/2"	150°	253 SF	65.7 SF	3	8	#10200
8000 gal (30275)	132"	144"	208"	138-1/2"	150°	290 SF	80.2 SF	3	8	#11300

- Standard (2) utility connections per zone, # zones indicates quantity of zones of shell
- Processors include minimum 10% freeboard over capacity.
- Dual spray ball unit rated for 80 GPM @ 25 PSIG.
- Split shaft seal not rated for pressure.



201 South Wisconsin Ave.
Stratford, WI 54484

715.687.4332
www.abprocess.com

YOUR COMPLETE
process systems partner.